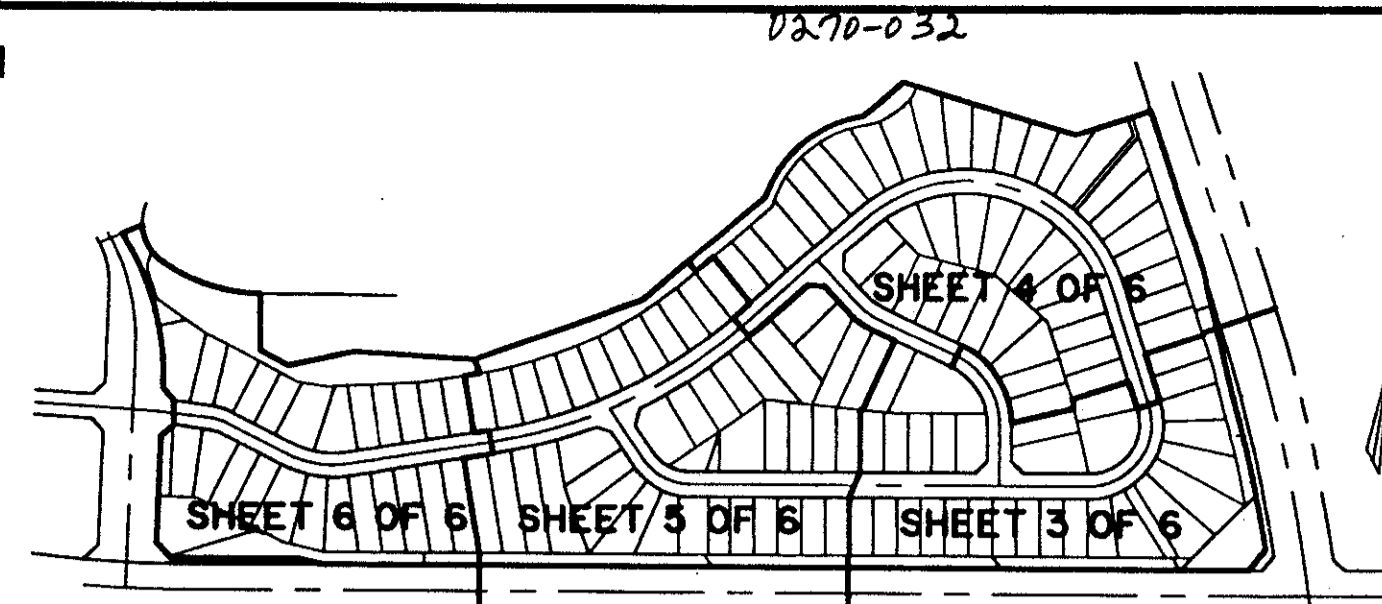


ABERDEEN-PLAT NO. 26 REPLAT

A PORTION OF A PLANNED UNIT DEVELOPMENT
 LYING IN SECTIONS 15 AND 16, TOWNSHIP 45 SOUTH, RANGE 42 EAST,
 BEING A REPLAT OF A PORTION OF ABERDEEN-PLAT NO. 26 AS RECORDED IN
 PLAT BOOK 79, PAGES 2 THRU 7, PUBLIC RECORDS OF PALM BEACH COUNTY, FLORIDA.
 SHEET 6 OF 6



99

STATE OF FLORIDA
 COUNTY OF PALM BEACH
 THIS PLAT WAS FILED FOR RECORD AT _____
 M. THIS DAY OF _____ 19____
 AND DULY RECORDED IN PLAT BOOK NO. _____
 ON PAGE _____
 DOROTHY H. WILKEN, CLERK OF THE CIRCUIT COURT
 BY _____ D.C.

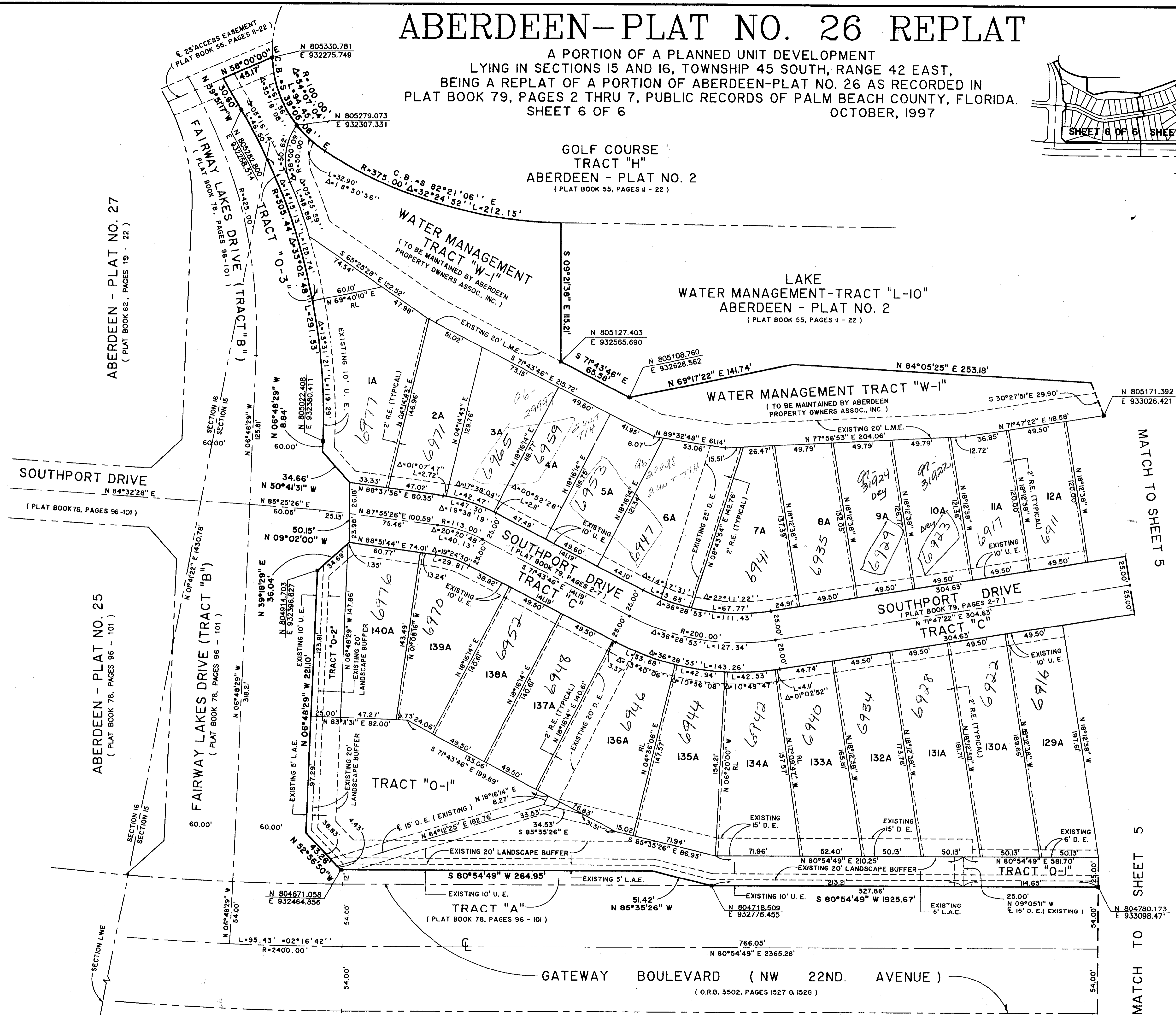
ABERDEEN - PLAT NO. 27
 (PLAT BOOK 82, PAGES 19 - 22)

ABERDEEN - PLAT NO. 25
 (PLAT BOOK 78, PAGES 96 - 101)

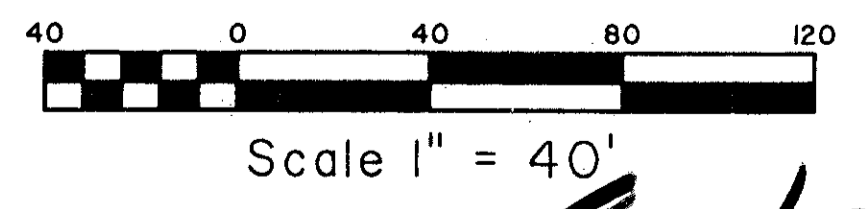
GOLF COURSE TRACT "H"
 ABERDEEN - PLAT NO. 2
 (PLAT BOOK 55, PAGES II - 22)

LAKE WATER MANAGEMENT-TRACT "L-10"
 ABERDEEN - PLAT NO. 2
 (PLAT BOOK 55, PAGES II - 22)

WATER MANAGEMENT TRACT "W-1"
 (TO BE MAINTAINED BY ABERDEEN
 PROPERTY OWNERS ASSOC., INC.)



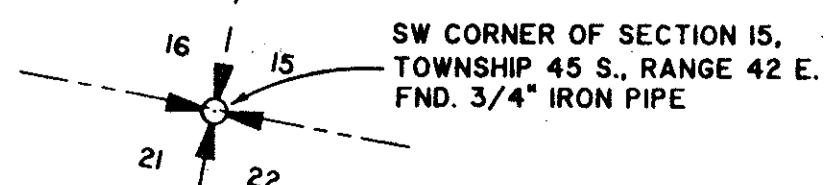
COORDINATE NOTE:
 STATE PLANE COORDINATES SHOWN ARE GRID DATUM, NAD 83 1990
 ADJUSTMENT, FLORIDA EAST ZONE, COORDINATE SYSTEM 1983 STATE
 PLANE, TRANSVERSE MERCATOR PROJECTION
 LINEAR UNIT = US SURVEY FEET
 ALL DISTANCES ARE GROUND
 SCALE FACTOR = 1.0000293
 GROUND DISTANCE X SCALE FACTOR = GRID DISTANCE
 S 88°36'17" W (PLAT BEARING) -0°45'15" COUNTERCLOCKWISE ROTATION
 S 89°38'28" W (GRID BEARING) PLAT TO GRID
 THE SOUTH LINE OF SECTION 15, TOWNSHIP 45 SOUTH, RANGE 42 EAST.



POOL

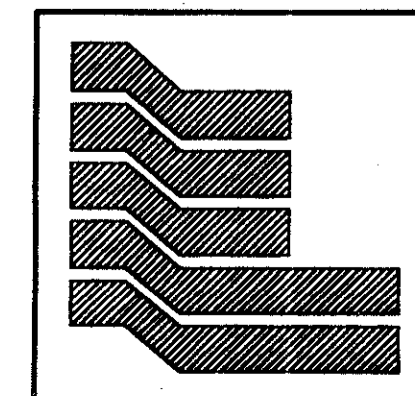
*Per. 80-153E
 #0001
 5/2/2/I*

SUBDIVISION # _____
 PAGE 99
 FLOOD MAP # 1854
 ZONING RC
 QUAD # 49-34
 ZIP CODE 33434
 PUD NAME Aberdeen



UTILITY SITE, LE CHALET PLAT NO. I
 (PLAT BOOK 31, PAGES 166 & 167)

0270-032



Landmark Surveying & Mapping Inc.
 1850 Forest Hill Boulevard
 Ph. (561) 433-5405 Suite 100 W.P.B. Florida

ABERDEEN-PLAT NO. 26 REPLAT

8/2/99